

CHANGLIN

CHANGLIN IMPORT&EXPORT CO.,LTD.



- ◆ Original Cummins, Euro II
- ◆ Low fuel consumption, high working efficiency.
- ◆ Advanced operation system, easy operating.
- ◆ Strong structure, long lifetime.



常州常林国际贸易有限公司

Excellent and Distinctive

- ◆ The large space, short distance lever and suspension seat create the best working environment for you.



1. Unique design of the skylight can block intense ultraviolet, and provide fresh air.
2. Eight air outlets ensure agreeable temperature in the cab, and improves your working efficiency.
3. The reasonable controller design of display and function is fully based on driver's operational habit to reduce the workload.

Safe and Comfortable Cabin

- ◆ For users of excavator, comfortable and safe operation condition is same important as the excellent performance of the machine.
- ◆ CHANGLIN excavator cab is designed with a new generation of aerospace cockpit technology, pillar is made of high quality materials to strengthen rigidity with security devices. With all the features, you will be always in a safe environment.
- ◆ Deluxe interior decoration, high-power air conditioning and color display instrument with advanced control system are available. Humanized design greatly reduces the tension and fatigue of operator, which enables them to work lightly and delightly.

Full Power Control



H: Heavy load mode

- ◆ for with heavy digging, can use power increase system shortly

S: Standard mode

- ◆ for with normal digging

L: Light load mode

- ◆ for with light digging on the ground with low fuel consumption



Lower consumption

- ◆ Original 6BTA5.9 Cummins engine, special design makes it 40% components fewer than same-level engine. Failure rate significantly reduced. Easy routine maintenance and repair without special tools.
- ◆ Environment-friendly engine, Euro II which conforms to environment requirements and powerful.
- ◆ A unique cooling system ensures average temperate and normal operation even in summer.
- ◆ Direct-injection fuel supply, full-flow filter forced lubrication and multi-stage dry type air filter, brings good fuel efficiency.
- ◆ Automatic dust-emissions valve and air filter plugging indicator, which greatly extends the service life of air filter and makes maintenance much easier.



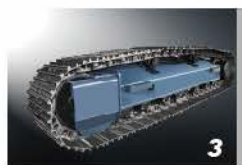
1. A full power control system of negative flow, double-pump cross, leads to energy efficiency and fast response; The function of automatic flow restoration, no-load start-up and effectively prevent overload; The new design of oil road ensures pump in a more integrated and work more reliably.
2. New built-in automatic locking system significantly improves operational safety; The safety valve with built-in particular oil outlet brings the functions of overload protection and anti-aircraft hole; Negative flow system with fast response to ensures the joystick in place of low-emission, it can reduce consumption; Unique design of valve core significantly improves accurate operational performance.
3. Wear-free hydraulic brakes, mechanical delay closedown— longer service time; Built-in buffer to start valve, pressure adjusting valve — smooth and non-impact; Built-in owner, Vice-double liquid-impedance anti-reverse valve — fast, accurate rotary positioning control, job stability further improved.

Five decades of professional structure manufacturing experience improve the service life and efficiency of machine



High Stability and Multi Purpose

- ◆ The Frame of enhanced X-box-type structure entirely welded by low stress and high-strength of steel plate to ensure strength and reliability.
- ◆ According to different working conditions, the three-ribs crawler board are selected from different levels of low-alloy material, and matching the high reliability sprocket, crawler wheel and crawler shelf, which are easily withstand the machine running on rough ground and the external shocks resulting from the wetland work.

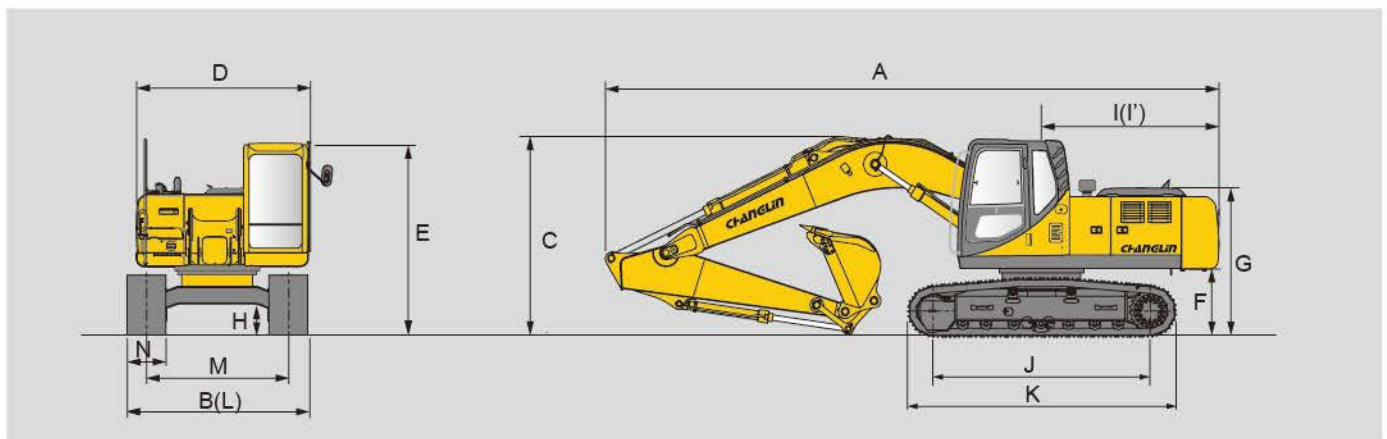


1. Strong and stable turning platform is welded by the high-strength alloy steel. Reliable drag chain wheel, supporting roller, track shoe shelf and crawler board made of high strength steel can adapt to all kinds of complex working conditions.
2. Boom and arm are fixed firm using a higher quality steel. Through the finite element analysis, the effective cross-sectional area can be increased and the steel plate can be thickened. It can be more suitable for mines, quarries and other harsh operating environment. All welds undergo ultrasonic flaw detection.
3. Built-in buffer to start valve—no impact and start smoothly; Built-in auto-reversing slide valve—immediately stop function when walking; Latest regular closed lock device—improve ramp braking security.

Main Specifications

EXCAVATOR TYPE 挖掘机型号	ZG3210-9/ZG3210-9C	ZG3225LC-9/ZG3225LC-9C	ZG3235-9/ZG3235-9C
发动机 Engine			
型号 Model	CUMMINS 6BTAA5.9	CUMMINS 6BTAA5.9	CUMMINS 6BTAA5.9
型式 Type	涡轮增压中冷 Turbo-charged with inter-cooled	涡轮增压中冷 Turbo-charged with inter-cooled	涡轮增压中冷 Turbo-charged with inter-cooled
功率 Power	112KW/1950rpm	112KW/1950rpm	133KW/2000rpm
最大扭矩 Max.torque	614N·m at 1500rpm	614N·m at 1500rpm	708N·m at 1500rpm
气缸数 No.of cylinders	6	6	6
排气量 Displacement	5883cc	5883cc	5883cc
液压系统 Hydraulic system			
主泵 Hydraulic motor:			
类型 Type	变量柱塞泵 Variable displacement axial piston pump	变量柱塞泵 Variable displacement axial piston pump	变量柱塞泵 Variable displacement axial piston pump
最大排量 Max. displacement	2x108cc/rev C TYPE 2x112cc/rev	2x108cc/rev C TYPE 2x112cc/rev	2x112cc/rev C TYPE 2x115cc/rev
主溢流阀设定压力 Working pressure	31.4/34.3Mpa C TYPE 31.4/34.3Mpa	31.4/34.3Mpa C TYPE 31.4/34.3Mpa	31.4/34.3Mpa C TYPE 32.3/34.3Mpa
液压马达 Main pump:			
回转 Swing	定量柱塞马达 axial piston motor	定量柱塞马达 axial piston motor	定量柱塞马达 axial piston motor
行走 Travel	定量柱塞马达 axial piston motor	定量柱塞马达 axial piston motor	定量柱塞马达 axial piston motor
油箱容量 Tank capacity			
燃油箱容积 Fuel tank capacity	400L	400L	400L
液压油箱容积 Hydraulic tank capacity	210L	210L	210L
规格 Specifications			
整机工作重量 Operating weight	21000kg	22000kg	23000kg
标准铲斗容量 Standard bucket capacity	0.8~1m³	0.91~1.1m³	1.0~1.2m³
斗杆长度 Arm length	2910mm	2910mm	3050mm
动臂长度 Boom length	5680mm	5680mm	5850mm
性能 Performance			
回转速度 Swing speed	12.4rpm C TYPE 12.0rpm	12.4rpm C TYPE 12.0rpm	11.3rpm C TYPE 10.5rpm
最大行走速度/档 Max. travel speed H/L	5.4/3.0km/h C TYPE 5.1/3.4km/h	5.4/3.0km/h C TYPE 5.1/3.4km/h	5.7/3.2km/h C TYPE 5.4/3.6km/h
爬坡能力 Gradeability	35°	35°	35°
铲斗最大挖掘力 Max. digging force of bucket	13700 kgf	13700 kgf	15900 kgf
斗杆最大挖掘力 Max. digging force of arm	10200kgf	10200kgf	12100kgf
接地比压 Ground pressure	47kpa	45kpa	50kpa

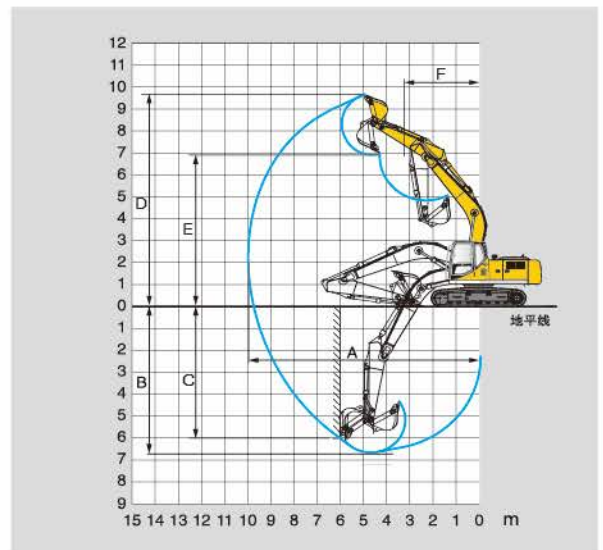
Dimensions(mm)



Unit(mm)

型号 TYPE	ZG3210-9/ZG3210-9C	ZG3225LC-9/ZG3225LC-9C	ZG3235-9/ZG3235-9C
A 整机总长 Overall length	9520	9520	9840
B 整机总宽 Overall width	2800	2990	2980
C 整机总高(动臂) Overall height of boom	3030	3030	3160
D 转台宽度 Width of platform	2700	2700	2700
E 整机总高(驾驶室) Overall height of cab	2958	2961	2990
F 配重离地间隙 Ground clearance of counterweight	1025	1028	1056
G 发动机机罩高 Height of engine cover	2338	2341	2369
H 最小离地间隙 Min ground clearance	470	470	480
I 转台尾端长度 Length of platform	2800	2800	2870
I' 尾端回转半径 Rear swing radius	2800	2800	2940
J 履带轴距 Track wheelbase distance	3370	3650	3460
K 底盘长度 Chassis length	4160	4440	4250
L 底盘宽度 Chassis width	2800	2990	2980
M 履带轨距 Track gauge	2200	2390	2380
N 标准履带宽度 Standard width of track shoe	600	600	600

Working Range



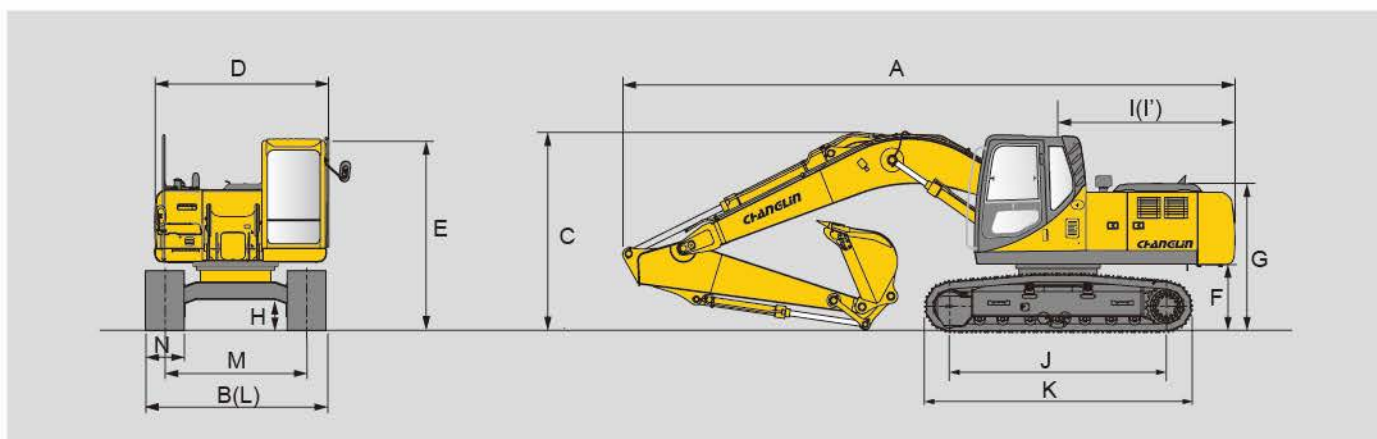
- ▶ Advanced control system ensures the operating accurate and fluent.

型号 TYPE	ZG3210-9/ZG3210-9C	ZG3225LC-9/ZG3225LC-9C	ZG3235-9/ZG3235-9C
A 最大挖掘半径 Max. digging reach	9953	9970	10180
B 最大挖掘深度 Max. digging depth	6690	6707	6920
C 最大垂直挖掘深度 Max. vertical wall digging depth	6104	6107	6010
D 最大挖掘高度 Max. digging height	9642	9665	9562
E 最大卸载高度 Max. dumping height	6813	6803	6746
F 前部最小回转半径 Min. swing radius	3560	3560	3740

Main Specifications

EXCAVATOR TYPE 挖掘机型号	ZG3255LC-9/ZG3255LC-9C	ZG3335LC-9C	ZG3365LC-9C
规格 Specifications			
整机工作重量 Operating weight	25000kg	32500kg	34000kg
标准铲斗容量 Standard bucket capacity	1.1~1.3m ³	1.4~1.45m ³	1.5~1.6m ³
整机功率 Machine Power		198kW/2000rpm	198kW/2000rpm
斗杆长度 Arm length	3050mm	4200mm	4200mm
动臂长度 Boom length	5850mm	6470mm	6470mm
发动机 Engine			
型号 Model	CUMMINS 6BTA4.9	CUMMINS 6CTAA8.3	CUMMINS 6CTAA8.3
型式 Type	Turbo-charged with inter-cooled	Turbo-charged with inter-cooled	Turbo-charged with inter-cooled
功率 Power	133KW/2000rpm	186KW/2200rpm	186KW/2200rpm
最大扭矩 Max.torque	614N·m at 1500rpm	1219N·m at 1300rpm	1219N·m at 1300rpm
气缸数 No.of cylinders	6	6	6
排气量 Displacement	5883cc	8290cc	8290cc
液压系统 Hydraulic system			
主泵 Hydraulic motor			
类型 Type	变量柱塞泵 Variable displacement axial piston pump	变量柱塞泵 Variable displacement axial piston pump	变量柱塞泵 Variable displacement axial piston pump
最大排量 Max. displacement	2x112cc/rev C TYPE 2x115cc/rev	2x140cc/rev	2x140cc/rev
主溢流阀设定压力 Working pressure	31.4/34.3Mpa C TYPE 32.3/34Mpa	32.3/34.3Mpa	32.3/34.3Mpa
液压马达 Main pump:			
回转 Swing	定量柱塞马达 axial piston motor	定量柱塞马达 axial piston motor	定量柱塞马达 axial piston motor
行走 Travel	定量柱塞马达 axial piston motor	定量柱塞马达 axial piston motor	定量柱塞马达 axial piston motor
油箱容量 Tank capacity			
燃油箱容积 Fuel tank capacity	400L	600L	600L
液压油箱容积 Hydraulic tank capacity	210L	275L	275L
性能 Performance			
回转速度 Swing speed	11.3rpm C TYPE 10.5rpm	9.7rpm	9.7rpm
最大行走速度高低 Max. travel speed H/L	5.7/3.2km/h C TYPE 5.4/3.6km/h	5.4/3.2km/h	5.4/3.2km/h
爬坡能力 Gradeability	35°	35°	35°
铲斗最大挖掘力 Max. digging force of bucket	15900 kgf	21000kgf	21000kgf
斗杆最大挖掘力 Max. digging force of arm	12100kgf	16100kgf	16100kgf
接地比压 Ground pressure	45kpa	53kpa	53kpa

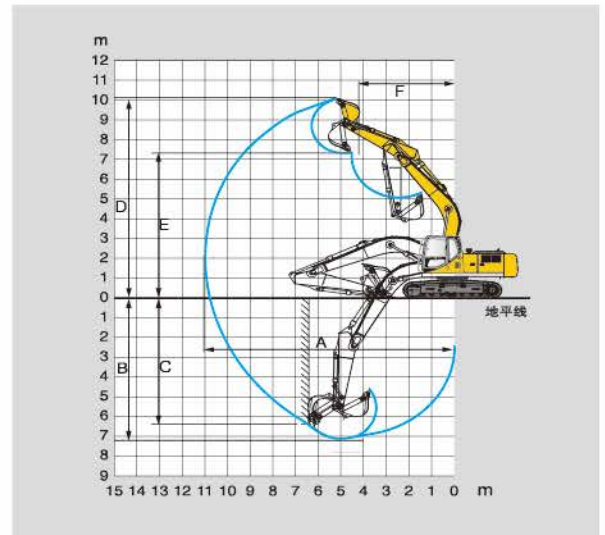
Dimensions(mm)



Unit(mm)

型号 TYPE	ZG3255LC-9/ZG3255LC-9C	ZG3335LC-9C	ZG3365LC-9C
A 整机总长 Overall length	9840	11140	11140
B 整机总宽 Overall width	3180	3280	3280
C 整机总高(动臂) Overall height of boom	3180	3280	3280
D 转台宽度 Width of platform	2700	2995	2995
E 整机总高(驾驶室) Overall height of cab	2996	3130	3130
F 配重离地间隙 Ground clearance of counterweight	1062	1220	1220
G 发动机机罩高 Height of engine cover	2375	2655	2655
H 最小离地间隙 Min. ground clearance	480	500	500
I 转台尾端长度 Length of platform	2870	3405	3405
I' 尾端回转半径 Rear swing radius	2940	3450	3450
J 履带轴距 Track wheelbase distance	3830	4050	4050
K 底盘长度 Chassis length	4640	4940	4940
L 底盘宽度 Chassis width	3180	3280	3280
M 履带轨距 Track gauge	2580	2680	2680
N 标准履带宽度 standard width of track shoe	600	600	600

Working Range



- ◆ Advanced control system ensures the operating accurate and fluent.

型号 TYPE	ZG3255LC-9/ZG3255LC-9C	ZG3335LC-9C	ZG3365LC-9C
A 最大挖掘半径 Max. digging reach	10258	11110	11110
B 最大挖掘深度 Max. digging depth	6995	7380	7380
C 最大垂直挖掘深度 Max. vertical wall digging depth	6090	6480	6480
D 最大挖掘高度 Max. digging height	9612	10210	10210
E 最大卸载高度 Max. dumping height	6690	7110	7110
F 前部最小回转半径 Min. swing radius	3740	4310	4310



Wheel Loader



Motor Grader



Excavator



Backhoe Loader



Vibratory Roller



Pneumatic Roller



Bulldozer



Truck Mounted Crane



Skid Steer

CHANGLIN IMPORT&EXPORT CO.,LTD.

Add.No.898 West Huanghe Road, Changzhou, Jiangsu,
P.R.of China

P.C: 213136

Tel: 86-519-86781288 86752400

Fax: 86-519-86781387

Http://www.changlin.com.cn

E-mail:sales@changlin.com.cn service@changlin.com.cn

DEALER: